

30 i 31 de gener i  
1 de febrer de 2014

La Llotja, Palau de Congressos de Lleida

XXIII

CONGRÉS DE  
LA SOCIETAT  
CATALANA DE  
DIGESTOLOGIA

XIX

Curs de Formació  
en Digestologia

Programa Final

Organitza



Societat  
Catalana de  
Digestologia  
ACM-SCB

# Polips Desafiants

Ponents

Dr Alfredo Mata Bilbao

Dr Xavier Serra Aracil

Moderador

Dr Francesc Vida Mombiela



# Polips difícils

- Definició: qualsevol pòlip que per la seva mida, la forma o la ubicació fa que sigui difícil de tractar per al colonoscopista.
- Mes risk de complicacions
  - » Monkemüller K et als Dig Dis 2008
  - » Vormbrock World J Gastrointestinal Endosc, 2012

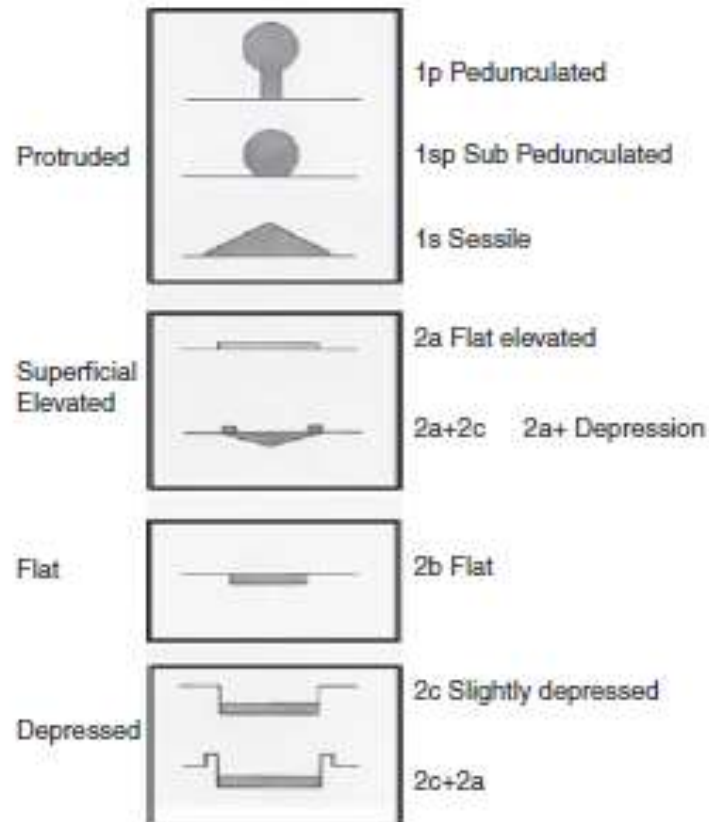


# Preguntes








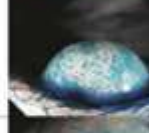






1. Com podem definir que es un pòlip difícil
  1. Tamany, forma, situació
  2. Patró de la mucosa
  3. Patró vascular
2. Com poder establir criteris de resecabilitat
3. Quines opcions de tractament tenim

# Morfologia

- Pot ajudar a valorar la Classificació de Paris



# Classificació de patrons de mucosa de lesions colorectals, proposat inicialment per Kudo i modificat per Kudo i Tsuruta

I		Round pit (normal pit)	
II		Asteroid pit	
III <sub>s</sub>		Tubular or round pit that is smaller than the normal pit (Type I)	
III <sub>l</sub>		Tubular or round pit that is larger than the normal pit (Type I)	
IV		Dendritic or gyrus-like pit	
V <sub>i</sub>		Irregular arrangement and sizes of III <sub>l</sub> , III <sub>s</sub> , IV type pit pattern	
V <sub>N</sub>		Loss or decrease of pits with an amorphous structure	

# Sano Classificació

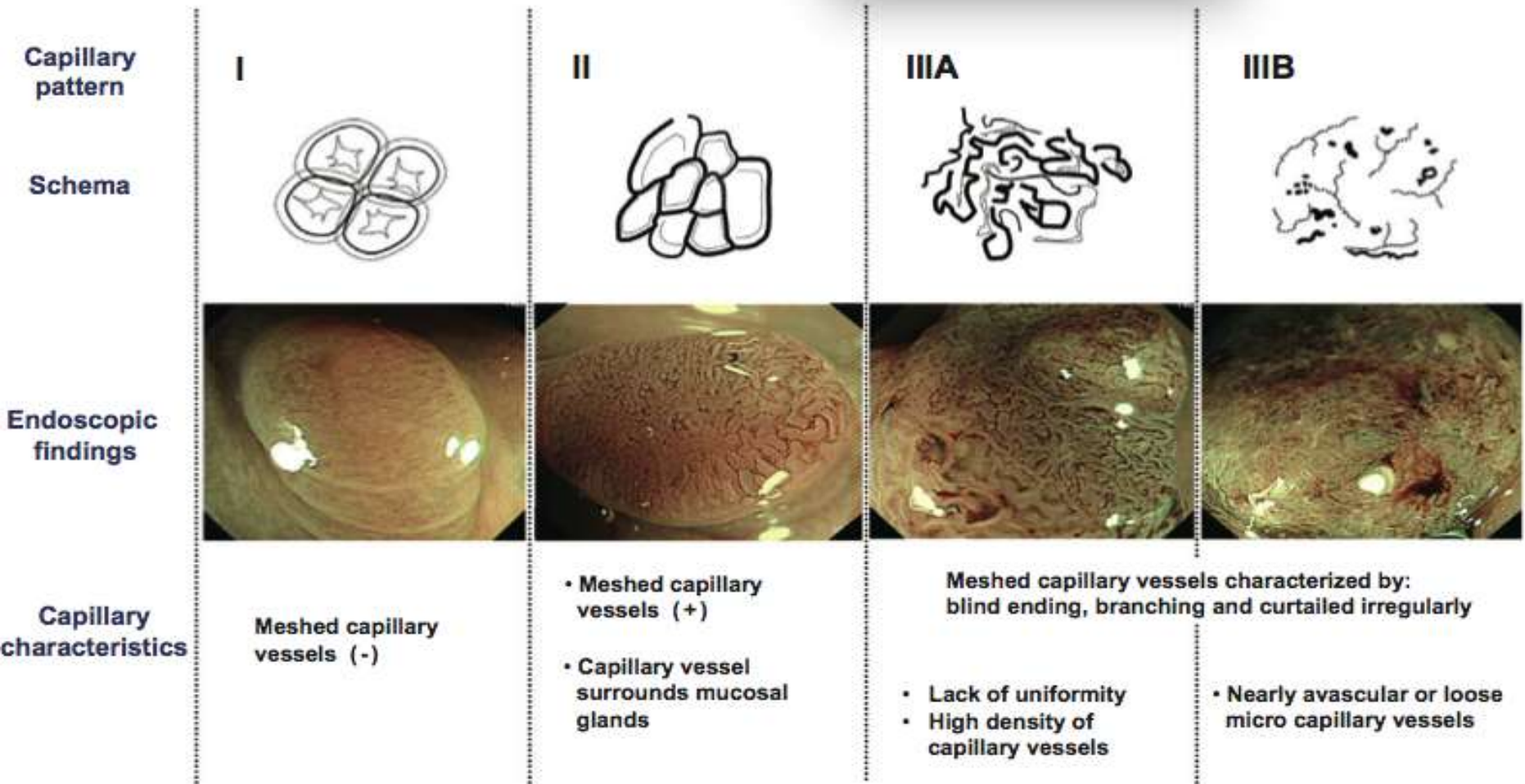
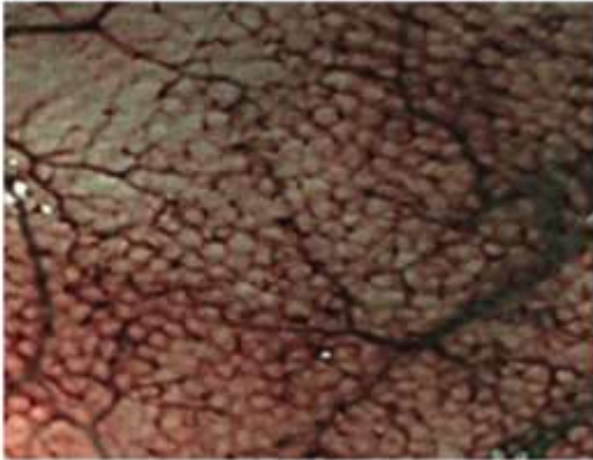
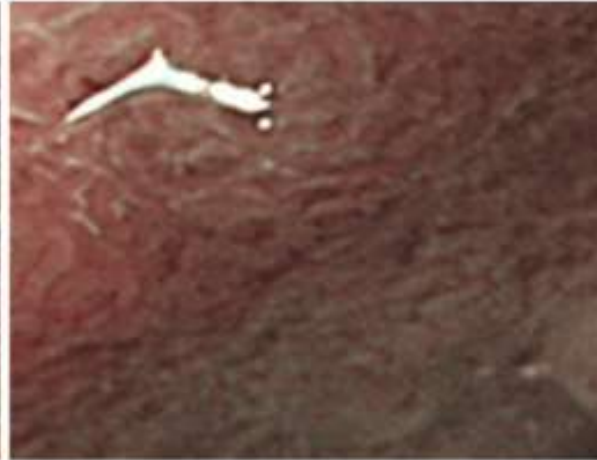


Fig. 2. Sano classification.

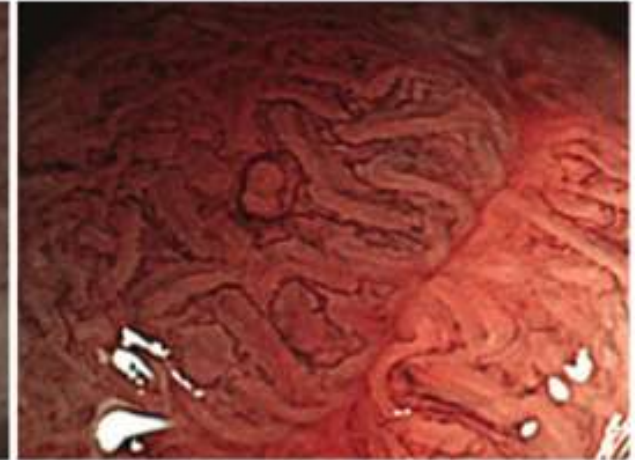
# Showa Classification



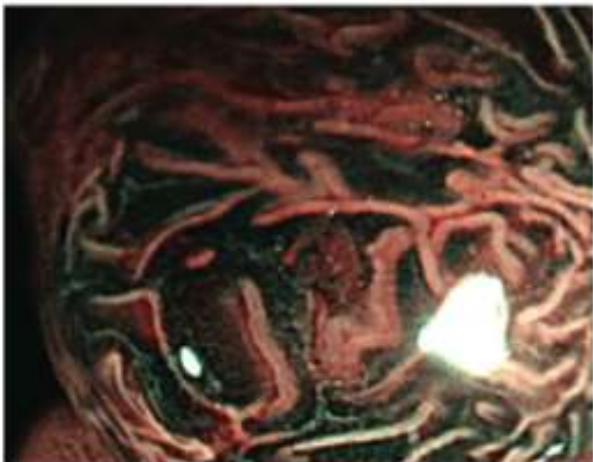
normal pattern



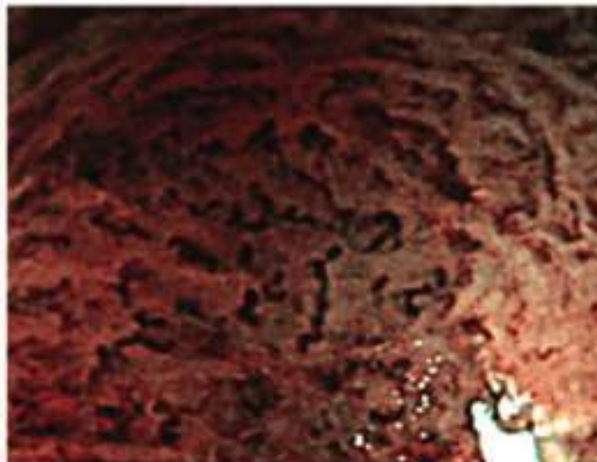
faint pattern



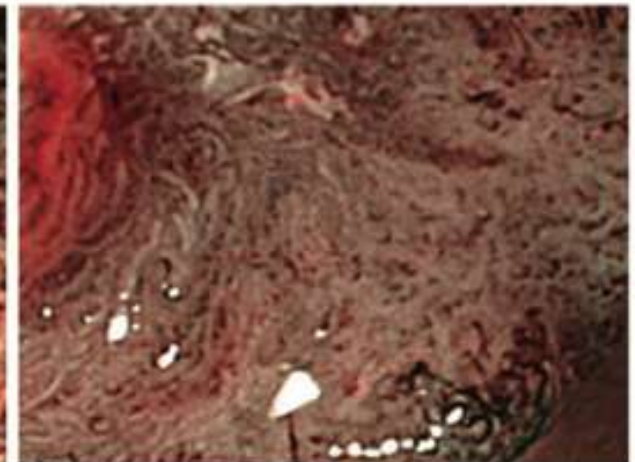
network pattern



dense pattern



irregular pattern



sparse pattern

# NICE Classification

## NICE classification: A closer look

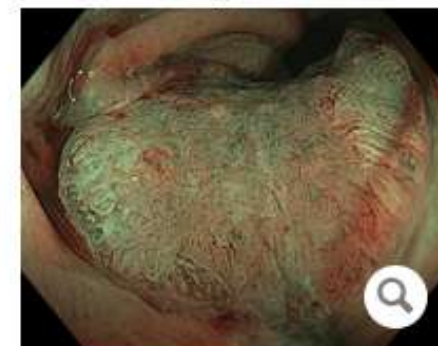
Type 1



Type 2



Type 3



Color

Same or lighter than background

Browner relative to background (verify color arises from vessels)

Brown to dark, brown relative to background; sometimes patchy whiter areas

Vessels

None, or isolated lacy vessels coursing across the lesion

Brown vessels surrounding white structures\*

Has area(s) of disrupted or missing vessels

Surface pattern

Dark or white spots of uniform size, or homogenous absence of pattern

Oval, tubular or branched white structures\* surrounded by brown vessels

Amorphous or absent surface pattern

Most likely pathology

Hyperplastic

Adenoma\*\*

Deep submucosal invasive cancer



# Relació entre classificacions



**Table 2.** Relationship between narrow band imaging international colorectal endoscopic (NICE) classification<sup>†</sup> and Sano/Hiroshima/Showa classification

	Type 1	Type 2	Type 3
Color	Same or lighter than background	Browner relative to background (verify color arises from vessels)	Brown to dark brown relative to background; sometimes patchy whiter areas
Vessels	None, or isolated lacy vessels might be present coursing across the lesion	Thick brown vessels surrounding white structures <sup>‡</sup>	Has area(s) with markedly distorted or missing vessels
Surface pattern	Dark or white spots of uniform size, or homogenous absence of pattern	Oval, tubular or branched white structures surrounded by brown vessels	Areas of distortion or absence of pattern
Most likely pathology	Hyperplastic	Adenoma <sup>§</sup>	Deep submucosal invasive cancer
Sano classification	Type I	Type II–III A	Type III B
Hiroshima classification	Type A	Type B–C2	Type C3
Showa classification	Faint pattern	Dense pattern Network pattern	Irregular pattern Sparse pattern



# Mes preguntes

1. En quines condicions
  1. Material
  2. Personal
  3. Temps
2. Quins resultats puc esperar
  1. Resecabilitat
  2. Complicacions



# Alternatives

- Cirurgia convencional.
- Cirurgia laparoscòpica
- TEM



# Preguntes al cirurgià

- Quand esta indicat fer un abordatge quirúrgic
- Quins resultats es poden esperar
- Quina diferència de resultats en el abordatge de les lesions rectals
- Quin paper juga la exploració rectal i la ECOendoscòpia



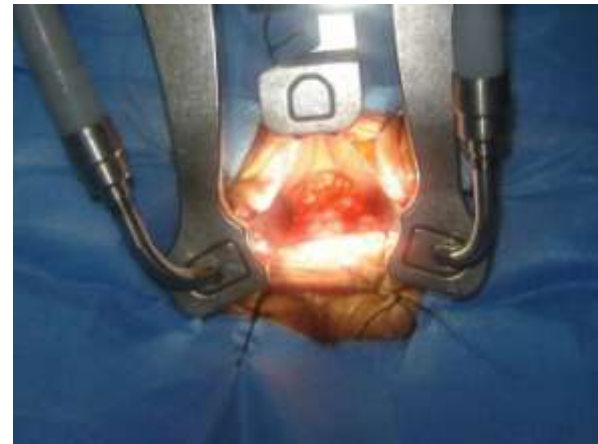
# Laparoscopia

## En El Maneig De Polips Difícils

- El endoscopista sempre ha de recordar que hi ha mètodes quirúrgics laparoscòpics i molt eficients que permeten la resecció de pòlips grans que utilitzen tècniques de resecció segmentària o en falca.
- La laparoscòpia és d'especial valor per als grans pòlips localitzats en el còlon transvers i dret.
- La resecció laparoscòpica és encara una alternativa als procediments d'ESD o EMR molt arriscats

# Microcirurgia endoscòpica transanal

- Microcirurgia endoscòpica transanal (MET) és l'equivalent quirúrgica al recte de l'EDS. Ofereix l'oportunitat addicional, si cal, de l'escissió de gruix total i el tancament del defecte rectal.



# XXVI

## Jornada Gastroenterològica de les Comarques Catalanes

Manresa, 26 d'abril de 2014

Hospital Sant Joan de Déu

[www.digestolegs.cat](http://www.digestolegs.cat)



DIGESTOLEGS  
COMARCALS  
CATALUNYA

Us esperem!