



EEA June 19th 2023



Characterizing and understanding neighborhoods in relation to health: urban food environment in Madrid



Manuel Franco MD, PhD

Public Health and Epidemiology Professor
School of Medicine, University of Alcalá, Spain

Department of Epidemiology
Johns Hopkins Bloomberg School of Public Health, Baltimore

@mfranco_uah



- Epidemiology and public health research career, both in the US and Spain, focused on Urban Health
- Social epidemiology and urban health as interdisciplinary areas working with social and environmental scientists
- Madrid, Berlin, Baltimore, NYC, Barcelona



CITIES & HEALTH

2022, VOL. 6, NO. 4, 651–656

<https://doi.org/10.1080/23748834.2022.2143740>



LEADING EDITORIAL



Challenges and opportunities for urban health research in our complex and unequal cities

Manuel Franco ^{a,b}, Ana V. Diez Roux ^{c,d} and Usama Bilal ^{c,d}

^aPublic Health and Epidemiology Research Group, School of Medicine, University of Alcalá, Madrid, Spain; ^bDepartment of Epidemiology, Johns Hopkins Bloomberg School of Public Health, Baltimore, MD, USA; ^cDornsife School of Public Health, Drexel University, Philadelphia, PA, USA; ^dDepartment of Epidemiology and Biostatistics, Drexel University School of Public Health, Philadelphia, PA, USA

- Global urbanization trends
- Climate change and health inequities in cities
- Methodological challenges
- Research opportunities



Urban Food Environment and Health

- Quantitative and geospatial analyses **HHH**
- Qualitative analyses **HHH**
- Mixed methods analyses **HHH**
- Participatory research **Photovoice**
- Children and adolescents centered research
SUECO, DIBA, Obesity Survey, SF4C
- Urban food systems research **Proposal**

ERC Starting Grants

FUNDING	1.5 million € for 5 years
OBJECTIVE	To encourage independent careers of excellent investigators providing enough support in the critical moment (starting to develop their own team).
ELEGIBILITY	PI must have a PhD degree in the last 2 to 7 years. <u>Available to non-EU researchers.</u>
REQUISITES	At least one relevant publication without his/her thesis advisor At least 50% effort
PROFILE	High potential, project with potential social Impact in Europe.



HEART HEALTHY HOODS



Universidad
de Alcalá

Social and Physical Urban environments and Cardiovascular Health: The much needed population approach





Manuel Franco MD, PhD
ERC Starting Grant 2014



Article

Socioeconomic Inequalities in the Retail Food Environment around Schools in a Southern European Context

Julia Díez ^{1,*} , Alba Cebrecos ¹, Alba Rapela ¹, Luisa N. Borrell ^{2,3} , Usama Bilal ^{1,4,5} 
and Manuel Franco ^{1,2,6}

- ¹ Public Health and Epidemiology Research Group, School of Medicine, Universidad de Alcalá, Alcalá de Henares, 28801 Madrid, Spain
 - ² Department of Surgery, Medical and Social Science, School of Medicine, Universidad de Alcalá, 28801 Madrid, Spain
 - ³ Department of Epidemiology and Biostatistics, Graduate School of Public Health and Health Policy, The City University of New York, New York, NY 10027, USA
 - ⁴ Urban Health Collaborative, Drexel Dornsife School of Public Health, Philadelphia, PA 19104, USA
 - ⁵ Department of Epidemiology and Biostatistics, Drexel Dornsife School of Public Health, Philadelphia, PA 19104, USA
 - ⁶ Department of Epidemiology, Johns Hopkins Bloomberg School of Public Health, Baltimore, MD 21205, USA
- * Correspondence: julia.diez@uah.es; Tel.: +34-918-852-522



Desigualdades en el entorno alimentario de centros educativos en Madrid

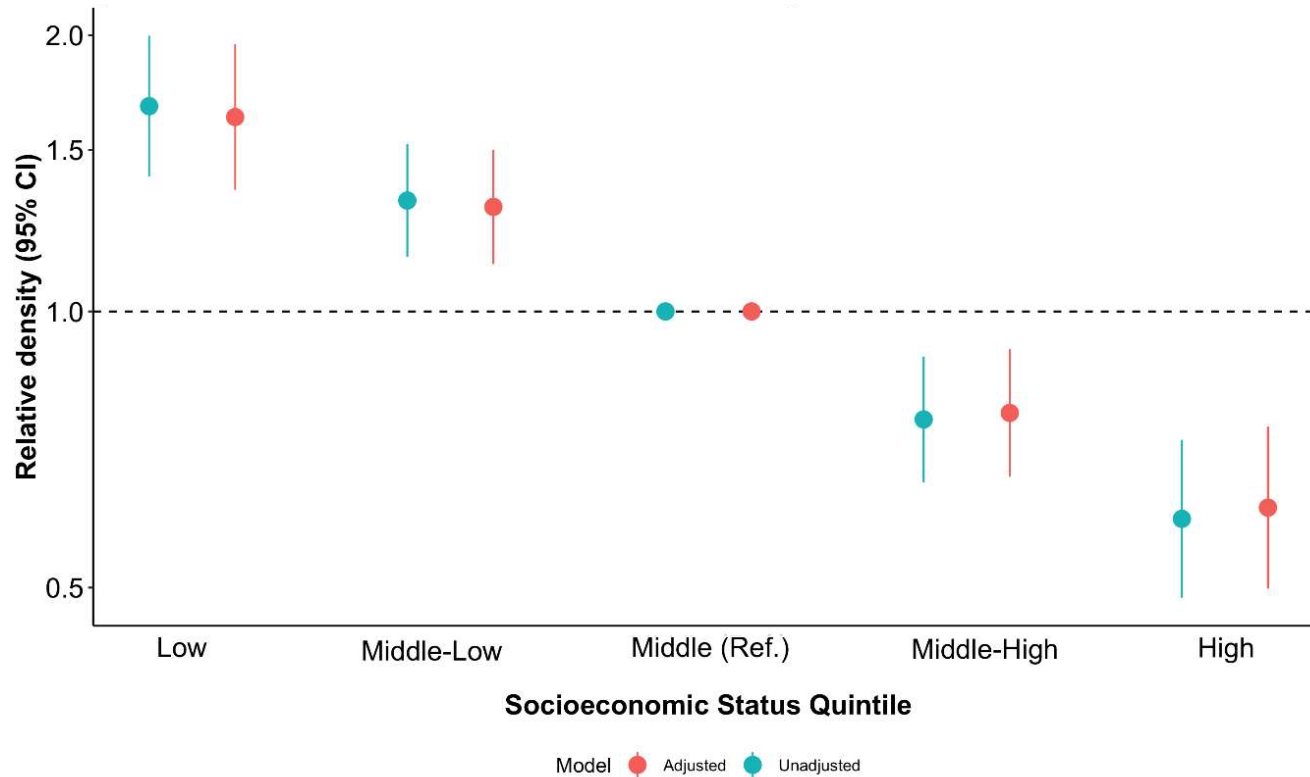


Figure 2. Multilevel negative binomial regression modelling neighborhood-level socioeconomic status with counts of unhealthy outlets around schools in Madrid (2017) before and after adjusting for population density.



Appetite 157 (2021) 104983

Urban environment and dietary behaviours as perceived by residents living in socioeconomically diverse neighbourhoods: A qualitative study in a Mediterranean context



Jesús Rivera-Navarro^{a,*}, Paloma Conde^b, Julia Díez^b, Marta Gutiérrez-Sastre^a, Ignacio González-Salgado^a, María Sandín^{b,c}, Joel Gittelsohn^d, Manuel Franco^{b,c,e}

^a *Sociology and Communication Department, Social Sciences Faculty, Universidad de Salamanca, Salamanca, Spain*

^b *Public Health and Epidemiology Research Group, School of Medicine and Health Sciences, Universidad de Alcalá, Alcalá de Henares, Madrid, Spain*

^c *Surgery and Medical and Social Sciences Department, School of Medicine and Health Sciences, Universidad de Alcalá, Alcalá de Henares, Madrid, Spain*

^d *Global Obesity Prevention Center, Department of International Health, Johns Hopkins Bloomberg School of Public Health, Baltimore, MD, United States*

^e *Department of Epidemiology, Johns Hopkins Bloomberg School of Public Health, Baltimore, MD, United States*

ARTICLE INFO

Keywords:

Qualitative research
Food environment
Neighbourhood
Diet
Socioeconomic status

ABSTRACT

Scholars have determined that low socioeconomic status (SES) is associated with unhealthy dietary behaviours and that local food environments shape food inequality. Less is known about how residents' perceptions of their food environment affect their dietary behaviours. We conducted 37 semistructured interviews and 29 focus groups in three socioeconomically distinct neighbourhoods in Madrid. We identified the following main categories related to social and physical food environments: (a) perceptions of healthy and unhealthy dietary behaviours, (b) children's relationships with food, (c) precariousness and (d) residential food retailer types. Older adults were perceived as healthier consumers, whereas younger people were identified as fast-food consumers. In the low- and middle-SES neighbourhoods, residents saw home-cooked legume-based stews as healthy food. In the high-SES neighbourhood, television cooking programs were highlighted as a positive influence. In the low- and middle-SES neighbourhoods, grandparents played an essential role in the transmission of healthy eating habits to their grandchildren. In the high-SES neighbourhood, children's diets at home were determined by school menus. In the low- and middle-SES neighbourhoods, participants talked about a black market where food could be purchased. Food retailers with low-quality foods were also highlighted. In all neighbourhoods, residents missed traditional food stores, and in the low- and middle-SES neighbourhoods, immigrant-run food stores were not well accepted. Our study presents the concepts shaping how neighbourhood SES differences affect dietary behaviours according to residents of a large Mediterranean city.



Public Health Nutrition: 20(16), 2970–2979

doi:10.1017/S1368980017001604

The mismatch between observational measures and residents' perspectives on the retail food environment: a mixed-methods approach in the Heart Healthy Hoods study

Julia Díez¹, Roberto Valiente^{1,2}, Carmen Ramos³, Reyes García³, Jbel Gittelsohn⁴
and Manuel Franco^{1,5,*}

¹Social and Cardiovascular Epidemiology Research Group, School of Medicine, University of Alcalá, Alcalá de Henares, Madrid 28871, Spain: ²Department of Geology, Geography and Environmental Sciences, University of Alcalá, Alcalá de Henares, Spain: ³Villaverde Health Promotion Center, Public Health Institute, Madrid Salud, Madrid City Council, Spain: ⁴Global Obesity Prevention Center at Johns Hopkins, Department of International Health, Johns Hopkins Bloomberg School of Public Health, Baltimore, MD, USA: ⁵Department of Epidemiology, Johns Hopkins Bloomberg School of Public Health, Baltimore, MD, USA

Conclusions: People's experienced retail food environment is different from the one quantitatively analysed. Results show the potential of using a mixed-methods approach to enrich food environment research and enhance public health interventions.



PHOTOVOICE VILLAVERDE PROJECT



A participatory action research project to improve the urban food environment in Madrid



Manuel Franco MD, PhD

Professor

School of Medicine, University of Alcalá, Spain

Department of Epidemiology

Johns Hopkins Bloomberg School of Public Health



● Ángel Frías



● Amador Silebo



● Daniel Rafael Mato



● José Luis Carrero



● Christine Funrock



● Esther Ortiz



● Juani Moreno



● Mercedes Bellot



● Isabel Masa



● M^a Soledad Olivo



● Mercedes Rivera



● Zakia El Khamlichi



● Beatriz Criado



● Juana Carulli



● Sagrario Gómez



● Encarnación Franco



● Rosa Arana



● Encarna Dopido





Urban Food Environment Publications

- **Diez J, et al. Health and Place,**
- **Budig K and Diez J, et al. BMC Public Health**
- Gullón P and Diez J, et al. IJERPH
- Franco M, et al. Gaceta Sanitaria
- Gravina L, et al. Appetite



Video Photovoice Villaverde



YouTube^{ES}

Buscar



Photovoice Villaverde

7429 visualizaciones • 29 ago 2016

62 NO ME GUSTA COMPARTIR GUARDAR ...

<https://youtu.be/VliFggKzVas>

<http://hhhproject.es>



HEART HEALTHY HOODS

www.hhhproject.eu



European Research Council

Established by the European Commission

Supporting top researchers
from anywhere in the world

A CITIZEN SCIENCE APPROACH FOR FOOD IN THE CITIES, THE HEART HEALTHY HOODS ERC PROJECT: EXHIBITION AT THE EUROPEAN PARLIAMENT

European Parliament will host from May 2nd through May 10th an exhibition on this project

The exhibition, which has the impulse of MEP Estefanía Torres, will be visible at the

Mezzanine YEHUDI MENUHIN, PHS building 1st Floor, European Parliament

Official public opening Thursday 4th at noon, registration at 11:30 am



Communicating photovoice results European Parliament





Manuel Franco Urban Health Child Health



Protocol

Influence of home/school environments on children's obesity, diet, and physical activity: the SUECO study protocol

Julia Díez^{a,*}, Pedro Gullón^{a,b}, Roberto Valiente^{a,c}, Luis Cereijo^a, Mario Fontán-Vela^{a,d}, Alba Rapela^{a,e}, Alejandro Blanco^f, Irene Valero^f, Agustín Haro^f, Gema Blasco^f, José Manuel Díaz-Olalla^f, Manuel Franco^{a,g}

5,961 children ages 3-12 in 60 schools in the city of Madrid

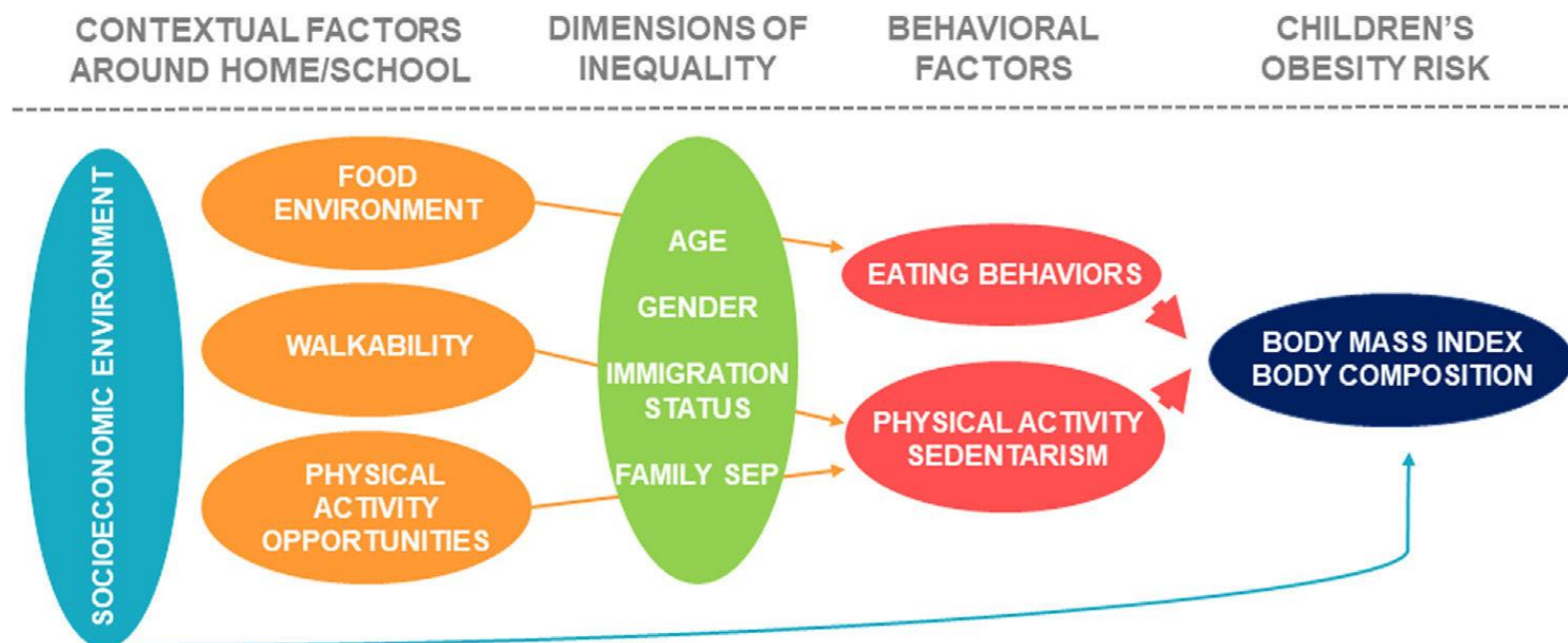


Figure 1. Flow-chart of the study population.



EU PROJECT, Child Health 14 cities, 4 evaluation cities



*Research and Innovation actions
Innovation actions*

Project Title

SCHOOLFOOD4CHANGE: SHIFTING SCHOOL MEALS AND SCHOOLS INTO A NEW PARADIGM, ADDRESSING PUBLIC HEALTH AND TERRITORIAL, SOCIAL AND ENVIRONMENTAL RESILIENCE



Work programme topics addressed:

Building a low-carbon, climate resilient future: Research and innovation in support of the European Green Deal (H2020-LC-GD-2020) – subtopic F

List of participants

No.	Participant organisation name (Participant Short Name)	Country
1 (Coordinator)	ICLEI European Secretariat GmbH (ICLEI Europe)	Germany
2	University of Alcalá (UAH)	Spain
3	Stockholm Environment Institute Tallinn (SEI)	Estonia
4	Rikolto (Rikolto)	Belgium
5	University of Gastronomic Sciences of Pollenzo (UNISG)	Italy
6	Stiftelsen Världsnaturfonden WWF (WWF Sweden)	Sweden
7	IFOAM - Organics Europe (IFOAM)	Sweden
8	Business Economics Science Education Foundation (BESEF)	Hungary
9	Association Risteco-La Ville qui Mange (Risteco)	France
10	EURECAT Technology Centre of Catalunya (EURECAT)	Spain
11	Fondazione Ecosistemi (Ecosistemi)	Italy
12	Danachda: Bildung für Nachhaltigkeit (Danachda)	Austria
13	Fair Trade Advocacy Office (FTAO)	Belgium
14	Mensa Cívica (MCI)	Spain
15	Speiseräume (SPR)	Germany
16	Skutečně zdravá škola (SZS CZ)	Czech Rep.
17	Skutočne zdravá škola (SZS SK)	Slovak Rep.
18	Municipality of Budapest/Budapest Fővárosi Önkormányzat (BUD)	Hungary
19	Municipality of Copenhagen/København's Kommune (CPH)	Denmark
20	Municipality of Essen/Stadt Essen (ESS)	Germany
21	Municipality of Ghent/Stad Gent (GHE)	Belgium
22	Municipality of Leuven/Stad Leuven (LEU)	Belgium
23	Municipality of Lyon/Ville de Lyon (LYO)	France
24	Municipality of Malmö/Malmö stad (MAL)	Sweden
25	Municipality of Milan/Comune di Milano (MIL)	Italy
26	Municipality of Nuoro/Comune di Nuoro (NUO)	Italy
27	City of Nuremberg/Stadt Nürnberg (NUR)	Germany
28	City of Tallinn/Tallinna linn (TALL)	Estonia
29	Municipality of Umeå/Umeå kommun (UME)	Sweden
30	Municipality of Vienna/Stadt Wien (VIE)	Austria
31	Municipality of Viimsi/Viimsi vald (VII)	Estonia
32	Department of Dordogne/Département Dordogne (DOR)	France
33	Valencia Regional Government/Generalitat Valenciana (VRG)	Spain

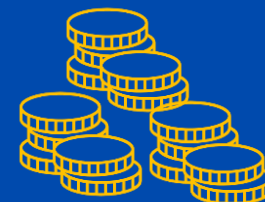


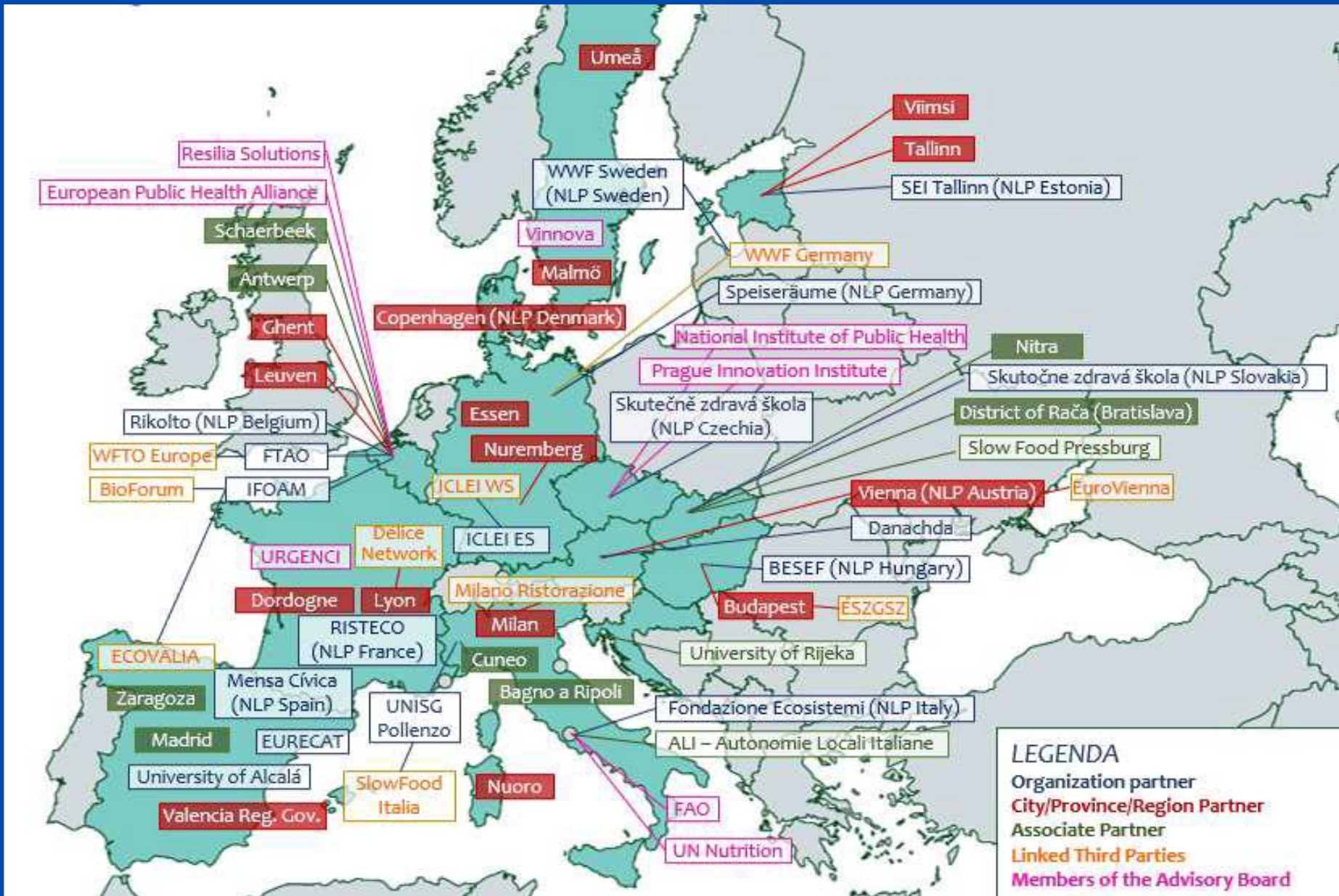
Figure 1.2. Overview of entities that submitted official Letters of Support for SF4C

Budget

Total: 12 000 000 €

UAH: 300 000 €





LEGENDA
 Organization partner
 City/Province/Region Partner
 Associate Partner
 Linked Third Parties
 Members of the Advisory Board

06/09/2023

Budget
 Total: 12 000 000 €
 UAH: 300 000 €

Digital labour platforms and its effects on health and well-being: a mixed-method project of gig workers in Sweden

PI: Nurilla Matilla-Santander

KICK-OFF MEETING

January 20, 2022

Project title: Digital labour platforms and its effects on health and well-being: a mixed-method project of gig workers in Sweden.

Project start: 2022-01-01

Project end: 2025-12-31

Review panel applied for: AH 2021, AO 2021, FH 2021 1

Classification code: 30303. Occupational Health and Environmental Health

Keywords: Platform work, Digital labour platforms, Mixed-method study, Occupational determinant of health, Precarious employment

Funds applied for

Year:	2022	2023	2024	2025	Total amount applied
Amount:	1,344,830	1,304,830	1,279,830	899,530	4,829,020

Participants

Participating researchers: Sherry L Baron

Birthdate: 19550922

Gender: Female

Country: USA

Doctoral degree:

Academic title: Professor

Employer: City University of New York

Participating researchers: Theo Bodin

Birthdate: 19820407

Gender: Male

Country: Sweden

Doctoral degree: 2014-06-30

Academic title: Assistant Professor

Employer: Karolinska Institutet

Participating researchers: Manuel Franco

Birthdate: 19740913

Gender: Male

Country: Spain

Doctoral degree:

Academic title: Professor

Employer: Universidad de Alcalá

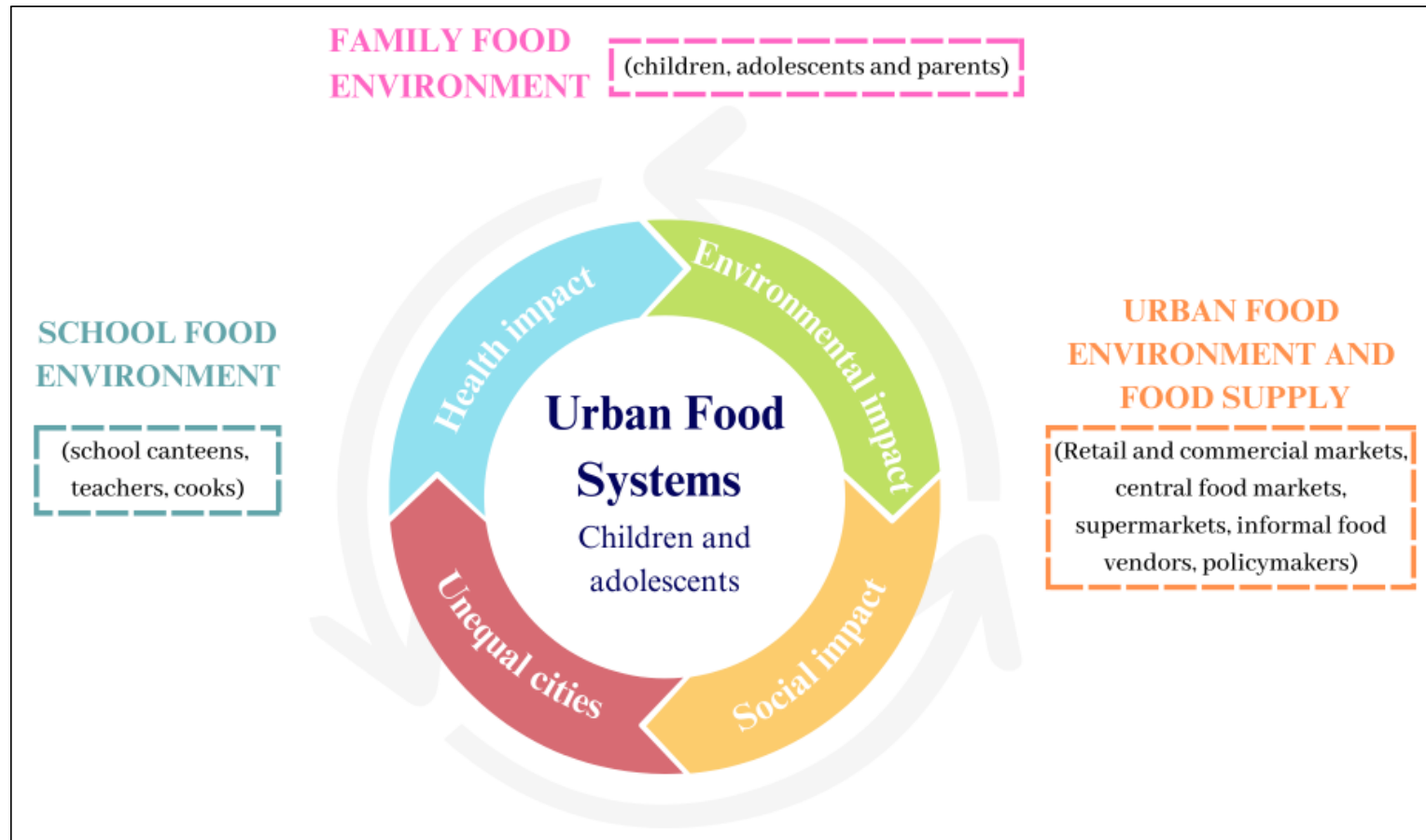


Manuel Franco, Madrid

Urban Food Systems research



Figure B2.2. “EAT4FUTURE” proposal framework for urban food systems for children and adolescents with the main environments and the three complementary health, environmental and social impacts.





Causal pathways on health and place:

Urban Food and Health

Urban Food Systems: health, environment,
comercial determinants, decent work

Evidence and potential data availability

European Topic Centre on Data Integration and Digitalisation



Thank you very much!



Universidad
de Alcalá



Manuel Franco MD, PhD
@mfranco_uah